

# The Orissa Gazette

EXTRAORDINARY  
PUBLISHED BY AUTHORITY

---

---

No. 1762 CUTTACK, WEDNESDAY, DECEMBER 13, 2006/MARGASIRA 22, 1928

---

---

No. 10153—OPP-56/2006-Com.

GOVERNMENT OF ORISSA

**COMMERCE & TRANSPORT (COMMERCE) DEPARTMENT**

**RESOLUTION**

The 27th November 2006

SUBJECT — Formation of Directorate of Ports & Inland Water Transport

Gopalpur Port Project was created for operation and management of Gopalpur Port in the year 1980, having its headquarters at Arjipalli in Ganjam district.

The Inland Water Transport Directorate was created in the year 1973 to look after the development, maintenance and operation of Inland Water Transport System in the State, having its headquarters at Cuttack.

Both the Directorates are two separate Heads of Departments under the administrative control of Commerce & Transport (Commerce) Department.

After privatization of Gopalpur Port, it is considered necessary to right size the establishment of Gopalpur Port Project to look after the other Minor Ports, Fishing Harbours and Jetties in the State by reorganizing the Gopalpur Port Project and Inland Water Transport Organisation into a “Directorate of Ports & Inland Water Transport”.

Orissa is a Maritime State having 480 Kms. coast line with 13 potential sites for development of Minor Ports. For better management of the port sector and Inland Water Transport Mechanism, Government after careful consideration decided to form a new Directorate of “Ports & Inland Water Transport” for the State by merging the Inland Water Transport Organisation and Gopalpur Port Project.

The Directorate shall be entrusted with the following functions for the present and will deal with such other functions as may be assigned to it by the Government from time to time.

1. The Directorate shall afford integrated service to the Government in the Commerce Department in respect of development of the proposed National Waterways in the State, apart from managing the existing fleet, boats for the transportation of people to the inaccessible areas where there is no other mode of transportation.
2. The Directorate will also look after the liaisoning and execution of all matters relating to Fishery Harbours/Jetties of Fisheries & Animal Resources Development Department as was done earlier by the Chief Construction Engineer, Gopalpur Port Project. It will also provide integrated service to other Departments of Government in marine related matters as and when required.

The Government of Orissa have adopted its own "Port Policy" to attract and invite private investment in the Port Sector. "The Orissa Boat Rules, 2004" has been issued by the Commerce Department for registration of boats in the State. This Directorate will administer both the Port Policy and the Orissa Boat Rules, 2004.

Government of Orissa is considering for creation of Maritime Board under the Orissa Maritime Board Act (OMB), which is under consideration. This Board will function as a single window facilitator for the entire Port & Inland Water Transport Sector in respect of private participation and other allied aspects. The Directorate will provide logistic support to the Orissa Maritime Board in form of staff & extend technical support to the Board.

A detailed Organization Chart of the Directorate of Ports and Inland Water Transport is placed at Annexure-I. Chief Construction Engineer, Gopalpur Port Project will function as Director of Ports & Inland Water Transport with headquarters at Bhubaneswar. The job chart of the Director is placed at Annexure-II. The post of Director of Ports and Inland Water Transport will be filled up on deputation from Department of Water Resources from the rank of S. E. (Civil) cadre whenever required.

One Executive Engineer (North) will be located at Cuttack and another Executive Engineer (South) will be placed at Gopalpur. The Assistant Conservator, Dhamra Fishing Harbour will be under the direct control of Director of Ports & Inland Water Transport.

---

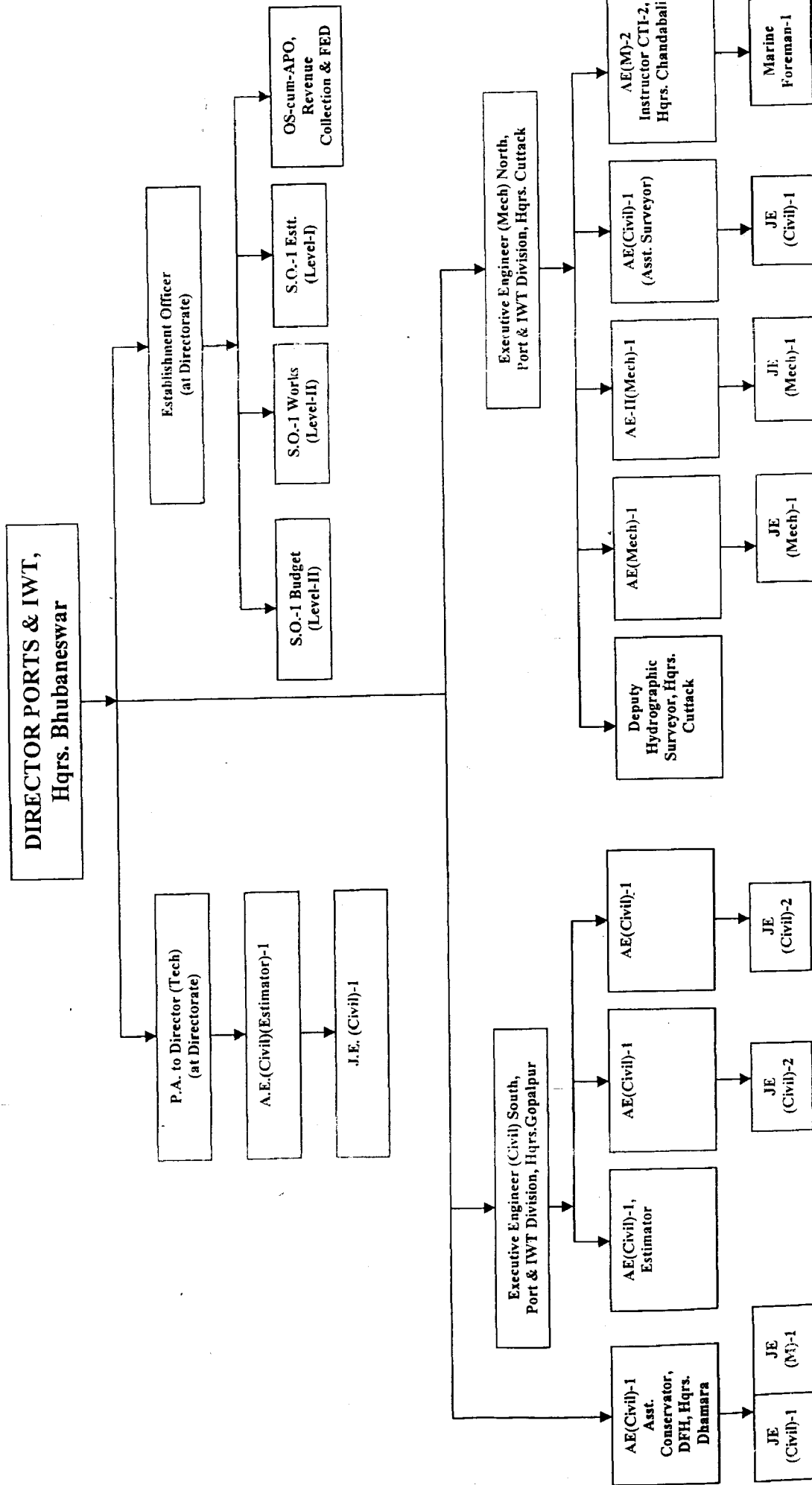
ORDER—Ordered that the Resolution be published in the *Orissa Gazette* for general information and copies be forwarded to all Departments of Government/all Heads of Departments/all Collectors / A.-G., Orissa, Bhubaneswar/ D.A.-G., Orissa, Puri/Ministry of Shipping, Road Transport & Highways, Department of Shipping, Transport Bhawan, 1-Parliament Street, New Delhi/Inland Waterways Authority of India, A-13, Sector-1, Noida, U. P. for information. It is further ordered that this Resolution shall take effect from the 1st December 2006.

By order of the Governor

PRIYABRATA PATNAIK

Principal Secretary to Government

ORGANIZATION CHART OF DIRECTORATE OF PORTS & IWT



**ABSTRACT**

Group-A-	5
Group-B-	15
Group-C-	123
Group-D-	85
<b>Total</b>	<b>228</b>

**Detailed staff position for Directorate of Ports & IWT**

1	Director Ports & IWT Rank of SE (Civil)	1	9	7
2	Executive Engineer (Civil)	1	10	3
3	Executive Engineer (Mech)	1	11	1
4	P.A.(Tech) to Director in the rank of AEE (Civil)	1	12	1
5	Deputy Hydrographic Surveyor in the rank of AEE (Civil)	1	13	2
6	Asst. Engineer in the rank of AE (Civil)	6	14	1
7	Asst. Engineer (Mech)	2	15	1
8	Instructor CTI in the rank of AE (Mech)	2		

### **JOB CHART OF DIRECTOR OF PORTS & I. W. T.**

1. Head of the Department for development of Minor Ports and I. W. T. Sector for 480 Kms. of Coastline and 200 X 50 Kms. Tidal Creeks. Estuarine Rivers, etc. in the State of Orissa.
2. Formulation of Project proposals for development of potential Minor Port sites including Jetties, Fishing Harbours and various marine installations and facilities.
3. Monitor the progress and development of new ports like Dhamra, etc.
4. Will be responsible to safeguard the State Government's interest under the BOO/BOOT BOOST for privatization.
5. To attract Private Port Developers/Inland Sector Transport Developers (with external funding) and to avail maximum Central Assistance.
6. Statutory and regulatory functions of Navigational Safety in all the declared Minor Ports, Fishing Harbours, Jetties, including installation/maintenance of Navigational Aids (like Lighted Beacons, Weather Warning Signal Stations, etc.)
7. Formulation of Plan for speedy implementation of Coastal shipment/I. W. T. Net-working including processing of project proposals for private funding, obtain various statutory clearances like Environment, Forest, Defence, etc.
8. Privatization of Projects, its implementation with statutory & technical collaboration with suitable financing (catalytic role).
9. Statutory functions of Inland Vessels Act, 1917 and Indian Ports Act, 1908 (revised from time to time).
10. Director, Ports & I. W. T. will act as Conservator of all Minor Ports in the State
11. Quality passenger transport service to inaccessible areas with proper management, so that the income will be more than the operational cost, excluding public utility aspects.
12. Impact modern improved technical training to man Inland vessels
13. Administrative control, regulations and execution of marine structures, construction and of Fishing Harbours/Jetties of F. & A.R.D. Department and other departments as per circulars of Ministry of Agriculture, Government of India & Central Institute for Coastal Engineering for Fisheries (CICEF).
14. All other statutory powers and functions exercised by C.C.E., G.P.P. and J. D. I. W. T.
15. Render technical & administrative assistance for –
  - (a) resolving bottlenecks of Land, Environment, various types of technical studies, valuation of assets & liabilities, etc ;
  - (b) development of Port Based Industries like L. N. G. terminal for import of 5 Million ton L.N.G., Special Economic Zone, Ship Breaking Industry as well as processing of Single Buoy Mooring Terminal at Palur.
16. Any other work as will be assigned by Government from time to time.